

Cart Placement

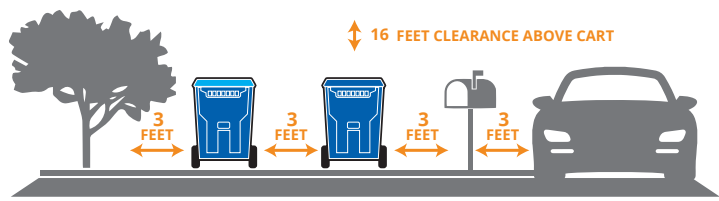
Place carts out by 7 a.m. on your collection day. Drivers have until 7 p.m. to service the carts.

Weekly – All 3 carts are emptied on the same day, but not by the same truck. Carts may be serviced at different times throughout the day.

Reasons waste may not be collected:

- Cart inaccessible
- Overfilled or overweight cart
- Insufficient space to service cart/car blocking cart
- Unacceptable contamination or hazardous waste found in cart.
- Waste, organics and recycling placed in the incorrect cart and/or lid not closed flat. Items placed outside the cart will not be serviced.

Cart Location – Place carts for collection either in the street gutter, against the curb, in front of premises, or adjacent to premises in the alley or easement in the rear of premises prior to 7 a.m. on your regular collection day, with the lid opening facing toward the street. Place carts in a visible location at least 3 feet apart and 6 feet away from mailboxes, trees, basketball hoops, cars or other stationary objects.



Your Services

Bulk Item Pickup

- Single-family dwellings are entitled to three (3) bulk item pickups per calendar year.
- Additional paid bulk waste pickup is available year-round, for a fee.

Hazardous Waste

- Please visit [OClandfills.com](https://www.oclandfills.com) for a list of designated drop-off locations in Orange County.

Walk-Out Service

- Walk-out service is available to eligible customers, at a location other than curbside, at no charge with appropriate ADA/handicap placard and verification.

Holiday Schedule

- Observed holidays are New Year’s Day, Memorial Day, Independence Day, Labor Day, Thanksgiving Day and Christmas Day.
- Collection will be delayed one day.

Holiday Tree Collection

- For 2 weeks following December 25 each year, holiday trees will be collected curbside.
 - No artificial or flocked trees accepted.
 - If your tree is taller than 6 feet, it must be cut in half to be collected.



IMPORTANT SERVICE CHANGES DUE TO SB 1383

City of Yorba Linda Residential How-To Guide

Service guide for residential solid waste, recycling and organics recycling collection.

800.700.8610
RepublicServices.com

For customer service
or billing questions,
please contact us at
800.700.8610



Sustainability in Action



Sustainability in Action



Recycling

Ensure all items are empty, clean, and dry.



**Your current recycle cart color is green. In the future, replacement recycle carts will reflect the state defined color scheme of a gray body with a blue lid.*

Organics



**Your current organic cart (formerly yard-waste) color is brown. In the future, replacement organic carts will reflect the state defined color scheme of a gray body with a green lid.*

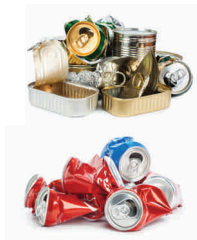
Organics Recycling Is the Law

Helpful Tips

Paper & Cardboard



Metal Cans



Plastic & Glass



New organics recycling program in Yorba Linda

As required by state law SB 1383, the City of Yorba Linda has launched a new residential organics recycling program in partnership with the City's waste hauler, Republic Services. Beginning July 1, 2022, residents must place organic waste, such as food scraps and yard trimmings, in your existing **brown** yard waste cart.

Food Waste*



Food-Soiled Paper & Paper Bags*



Yard Waste



**You can place food in a paper bag*

The Law

California Senate Bill 1383 (SB 1383), requires reductions of organic waste in landfills as part of a greater plan to reduce emissions of short-lived climate pollutants. SB 1383 establishes targets to achieve a 50% reduction in statewide disposal of organic waste from the 2014 level by 2020 and a 75% reduction by 2025.

What does it mean?

Your yard waste cart is now your organics cart! Starting July 1, 2022, place food waste, food-soiled paper and yard waste into your **brown** organics cart.

What are the benefits?

Recycling organics helps reduce greenhouse gas emissions, creating less air pollution.

What happens to the organic waste once I sort it?

Republic Services will collect the organic waste and transport it to a composting facility, which will turn the organic waste into nutrient-rich fertilizer.

Contamination

SB 1383 requires contamination monitoring of residential carts to ensure program success. Contamination occurs when you place incorrect items in recycling and organics carts. If contamination is found in your carts, a courtesy pickup notice will be left on your cart. On the subsequent occasions of reported contamination, fees may be assessed.



Kitchen Pails

Collect your food waste and minimal amounts of food-soiled paper in a kitchen-counter pail of your choice. You can also place food in a paper bag. Once filled, empty the pail, or place the paper bag into your **brown** organics cart with your yard waste.



Kitchen pails (2-gallon size) are available for purchase from various retailers or by calling Republic Services at **800.700.8610**.

Yes, Paper Bags!

Paper bags are allowed and can be used to collect food scraps. You may place a paper bag in the **brown** organics cart.



No Plastic Bags or Compostable Utensils

Plastic bags of any type are not acceptable, even if they are labeled as compostable or biodegradable. Compostable cups, plates or utensils are also not acceptable.



Helpful Tips

How to Keep Your Kitchen Pail Clean

- Rinse your pail daily or as needed.
- Use a paper bag to line your pail.
- Baking soda and charcoal filters can help minimize odors.
- Keep your food scraps in the fridge or freezer, and empty them directly into the **brown** organics cart on your service day to minimize odors.

How to Keep Your Organics Cart Clean

- Line your cart with yard waste first, then place your food waste on top.
- Rinse your cart as needed.
- Add baking soda to the bottom of your empty cart.

No Fats, Oils or Grease

Fats, cooking oils and grease are not acceptable in the **brown** organics cart. Cooled fats, oils or grease in a sealable container are acceptable in your **black** trash cart.



Trash



**Your current trash cart color is black. In the future, replacement trash carts will reflect the state defined color scheme of a gray body with a gray lid.*

Styrofoam®



Clothing & Bedding



Diapers & Pet Waste



Fats, Oils & Grease



Garden Hoses



Non-Recyclable Plastics



Toys



Dishes & Mirrors

